

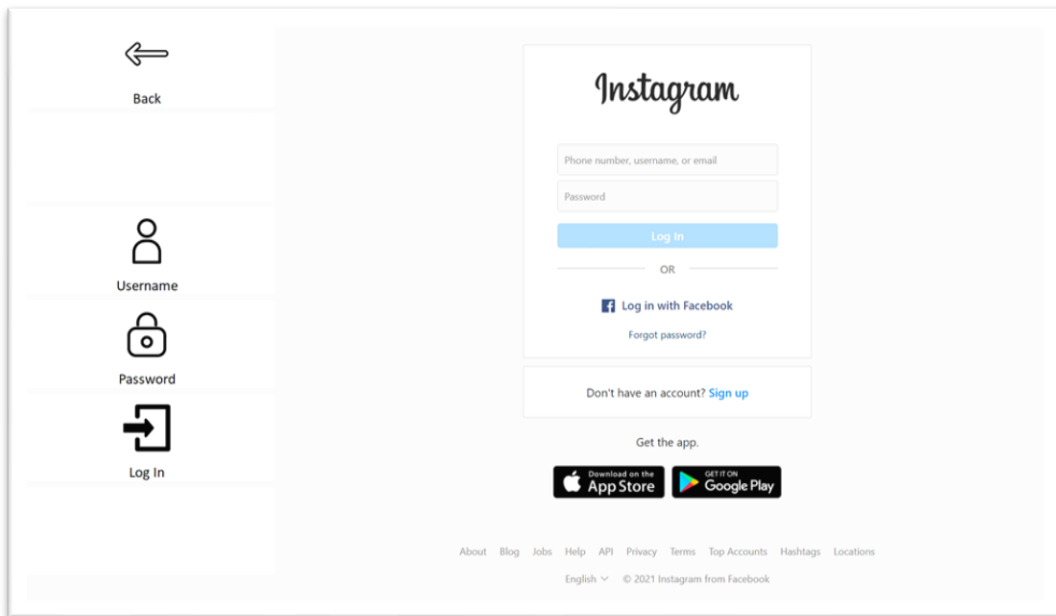


Digital life made easy

Join-In for Communicator 5

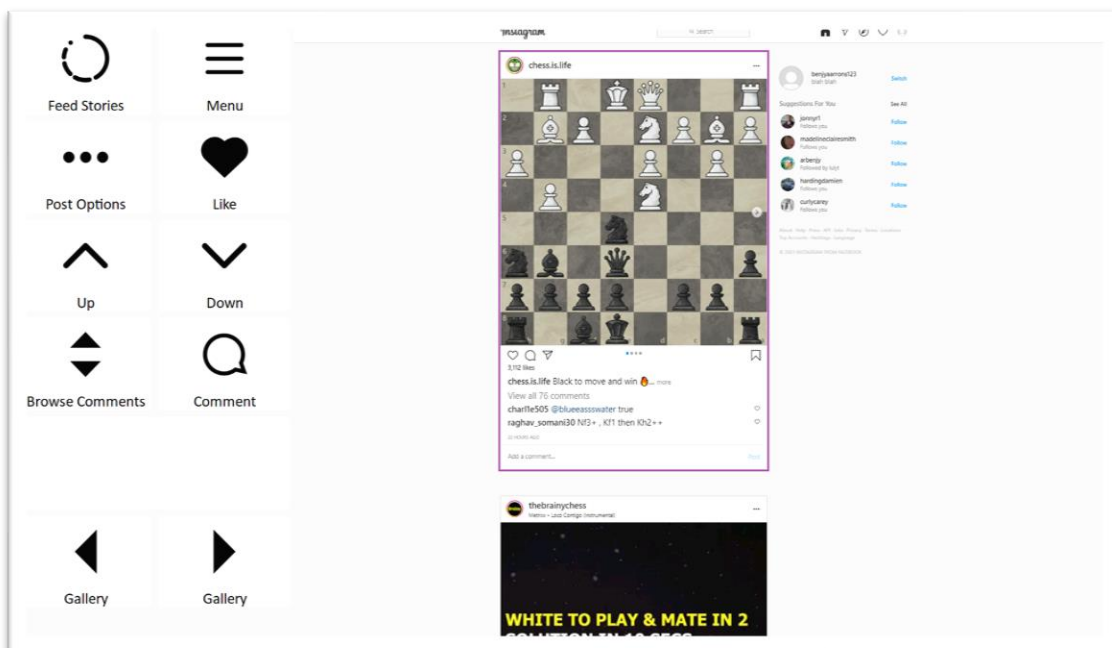
Accessible Instagram





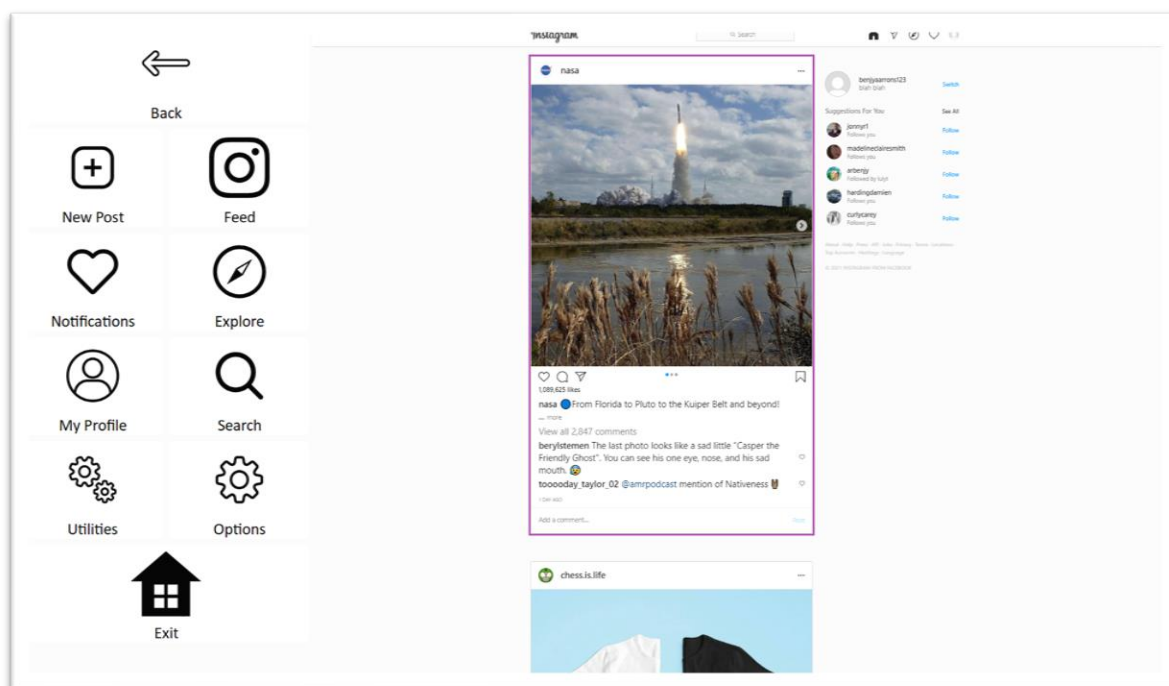
Getting Started

- **Requirements** – to use Accessible Instagram you need an Instagram or a Facebook account. If you use Instagram with your Facebook account, make sure you log-in to Facebook, using Accessible Facebook. Otherwise make sure you have your login and password available.
- **Login** – After selecting **Accessible Instagram** from your Home Page, follow the sequence – **Login and Info** => **Log In** => **Username** => enter your Instagram account username => **Password** => enter your Instagram account password => **Log In**.
- You are now logged in to Instagram. Select **Continue to Instagram** to start using the app
- You can also reach the login controls via **Menu** => **Options** => **Log In** if you are already in the main part of the app.



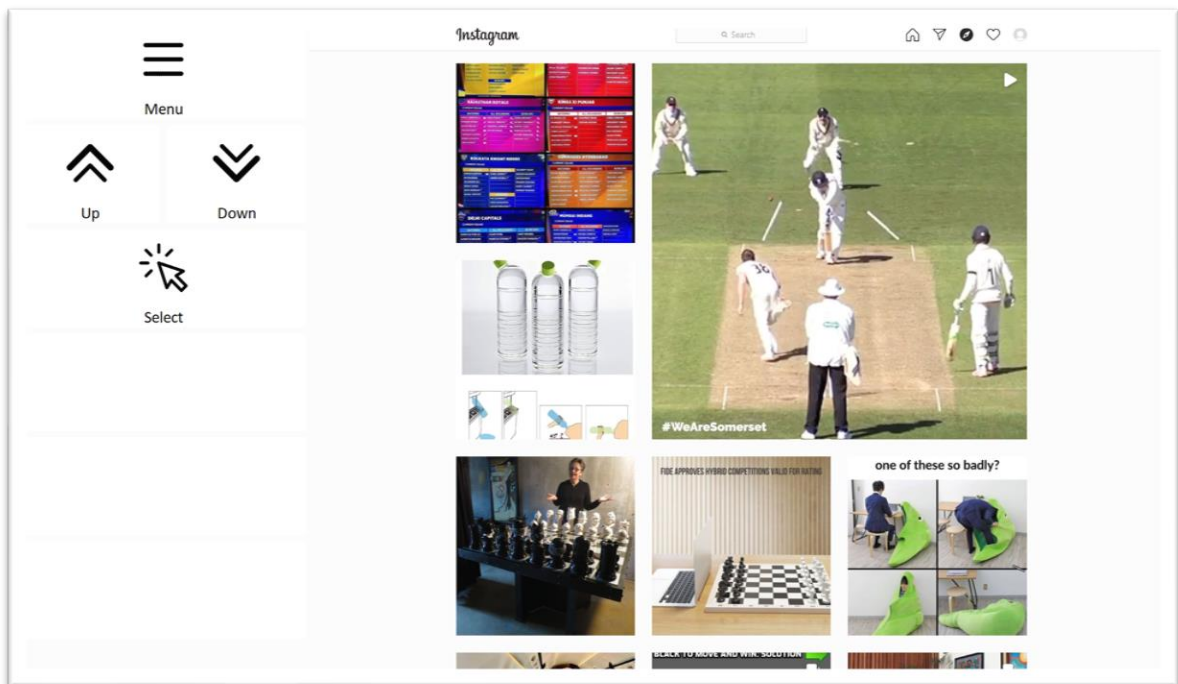
Feed Page

- The **Feed** page on Instagram shows a scrollable collection of posts from accounts that you follow. This is the home page of Instagram and it is the page you land on when on first open the app.
- **Menu** – takes you to the main menu for Accessible Instagram and allows you to navigate to other parts of the site.
- **Up / Down** – a border frame shows which post is currently selected. Navigate up or down to select different posts using these buttons.
- Several different actions can be performed on the post that is currently selected. Some of the buttons on this page will change according to the type of post that is selected and what you can do with it. **Play/Pause** appears for videos, and **Left / Right** arrows allow scrolling through **Gallery** posts.
- **Like** – like the selected post.
- **Comment** – write a comment or send an emoji to the selected post.
- **Browse Comments** – see and interact with all comments on the selected post
- **Post Options** – access more actions for the selected post, including; go to the account page of the **Post Author**, **Follow / Unfollow** the account, **Go to Location** of the post, **View Hashtags** to explore related content, and **Save** the post to your **Profile** page.
- **Stories** – view the **Stories** posts on your feed page.



Menu

- **Back** – returns you to the page you were previously viewing.
- **Feed** – takes you to the **Feed** page.
- **Explore** – see a collection of posts from a range of accounts based on Instagram’s recommendations.
- **My Profile** – go to your own **Profile** page. From here you can see all of your own **Posts**, as well as posts by other people that you have **Saved** or been **Tagged** in.
- **Search** – search for **Accounts** to follow or **Hashtags** to explore.
- **Notifications** – see notifications when other users interact with your account.
- **Utilities** – **Recover** or reopen Instagram, **Block Touch** or **Allow Touch** access, close windows you do not need, close popup messages, zoom in or zoom out...
- **Options** – change the computer volume, toggle text enlargement and set text size, turn on auto-read for comments, login and logout of Instagram, and access the [Join-In Settings](#) app.
- **Exit** (Communicator Home Page) – exit Accessible Instagram.

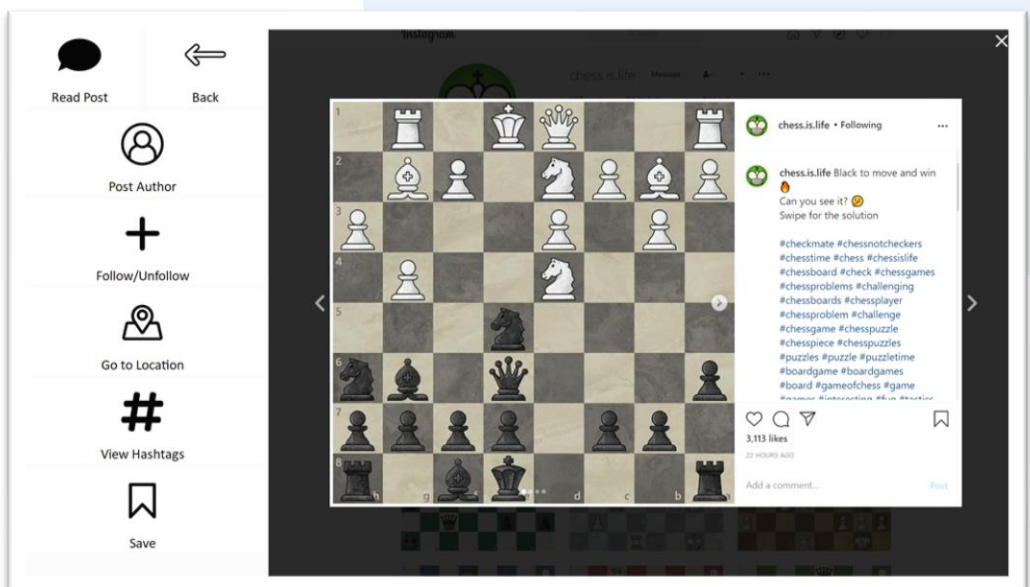
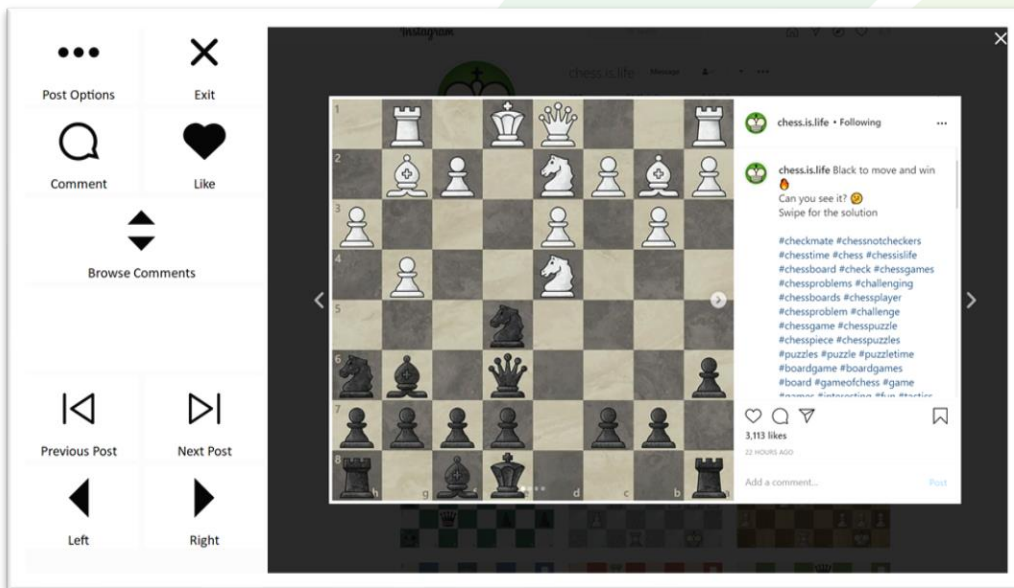


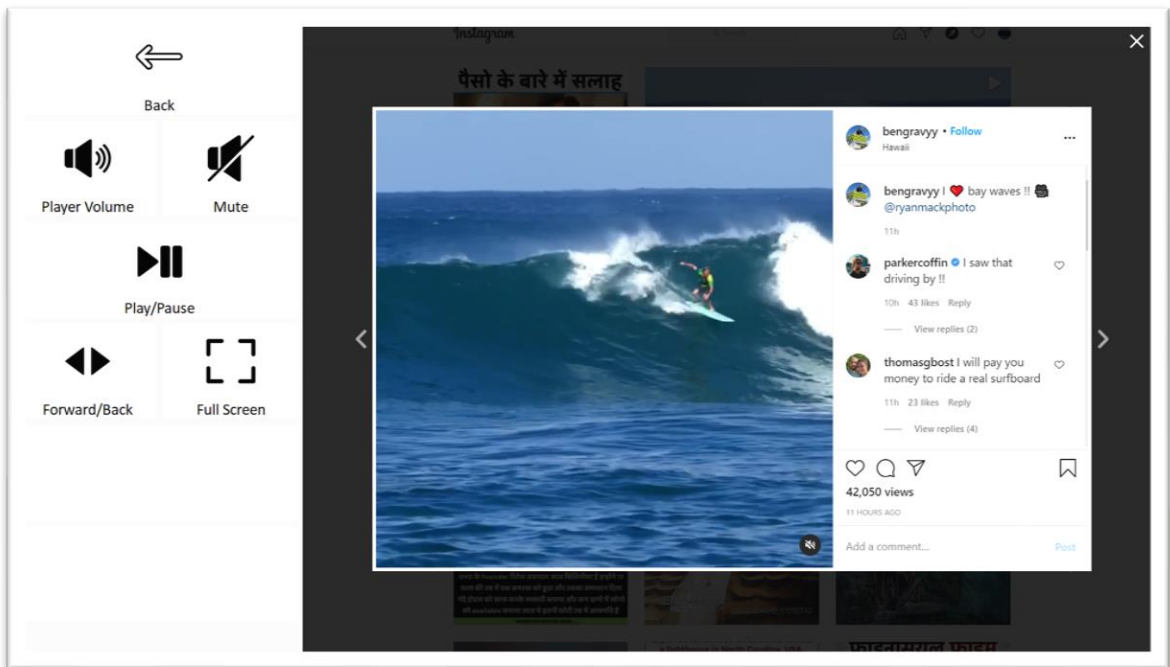
Explore

- Explore posts from a range of accounts recommended by Instagram.
- The Instagram website contains many other 'explorer' style pages that look a bit like the **Explore** page shown in this picture. An explorer page on Instagram consists of many rows of selectable posts that can be opened and scrolled through. The buttons you see on these pages will depend on what part of the site you are visiting and the accessibility settings you are using.
- As well as the **Explore** page, your own **Profile** page, **Hashtag** pages and other user **Account** pages are all explorer page on Instagram and they all work the same way.
- **Top Row** – will always contain a link to the **Menu**, and sometimes another button for navigating to other sections on the same part of the site.
- **Middle Rows** – will contain all the buttons you need to be able to navigate between all the posts on the explorer page and select one to open up in the **Open Post Viewer**. The buttons you see depend on the **Selection Method** applied in the **Join-In Settings** app. Consult these training cards for full guidance on how to change your accessibility settings.
- **Bottom Row** – this row contains additional features or options if any are available. Examples include; **Follow Account**, **View Hashtags**, **Follow Hashtag**, etc.

Open Post Viewer

- When you open a post from an explorer page you are able to perform all the same actions on it that are available for selected posts on the **Feed** page.
- Scroll with **Previous Post** and **Next Post**, then **Like**, **Comment** or **Browse Comments**. **Play / Pause** and **Video Controls** will appear when you open a video post, and **Left / Right** will show for **Gallery** posts.
- **Post Options** – access more actions for the selected post, including; go to the account page of the **Post Author**, **Follow / Unfollow** the account, **Go to Location** of the post, **View Hashtags** to explore related content, and **Save** the post to the saved posts on your **Profile** page.





Video Controls

- **Player Volume** – controls for adjusting the volume of Instagram videos only. Your device volume is not affected, and you may need to adjust this too. Access device volume via **Menu => Options**.
- **Mute** – mute / unmute video volume.
- **Play / Pause** – start or stop the video playing.
- **Forward / Back** – fast forward and rewind controls, as well as **Bookmarks** for jumping to different parts of the video.
- **Full Screen** – view your video at full size with Join-In [Full Screen Video Player](#).